



## **“ARM HARDWARE PLATFORM FOR VEHICULAR MONITORING AND TRACKING USING GPS AND GSM”**

**SREEJA V S**

**ME Electronics 2<sup>nd</sup> year ,PIIT, New Panvel**

**PROF. SUMAN P WADKAR**

**ASST PROF DEPT OF ELECTRONICS**

**Abstract**— Design of Vehicular monitoring and tracking system based on ARM using GSM and GPS is proposed. The vehicular module is used to track, monitor, and surveillance and finds the accident spot and intimate to the monitoring station. The proposed design provides information regarding vehicle Identity, speed, and position on real time basis. This information are collected by the ARM7 TDMI-S core processor LPC2148 by using different modules in the system and dispatch it to the monitoring station where it stores the information in database and display it on graphical user interface (GUI) that is user friendly. GUI is built on Microsoft Visual Basics. The system consists of cooperative components of MEMS accelerometer, microcontroller unit, GPS receiver and GSM module. In the event of accident, this wireless device can send SMS indicating the position of vehicle by GPS system to family member, emergency medical service (EMS) and nearest hospital. The threshold algorithm and speed of motorcycle are used to determine fall or accident in real-time.

**Keywords**- - ARM7 TDMI-S, MEMS Accelerometer, GPS, GSM, LPC2148, Wireless monitoring station.

### 1. Introduction

Mankind has always reacted to problems with strong determination aimed at providing better solutions to difficulties. From the use of celestial navigation to the use of compass man has always searched for a means of accurately locating his position on the globe with precision and accuracy necessary to avoid tragedy and to reach his intended destination. One could also want to locate a specific place in a locality familiar to him. This could be a shopping mall, a petrol station, a hotel, or even an office. The Global Positioning System (GPS), is a popular satellite navigation system which makes use of a constellation of more than two dozen GPS satellites to transmit precise radio wave signals in any weather, day or

night, anywhere on Earth. This allows a GPS receiver in an unobstructed line of view to synchronize with the satellite to determine its current horizontal location to the nearest 15 meters radius in latitude, longitude and altitude by connecting to just four satellites in its horizon. It provides accurate three-dimensional position (latitude, longitude, and altitude), velocity and precise time traceable to Coordinated Universal Time (UTC). To make the device user friendly, the information from the GPS is translated to information that can be understood via a map [3]. The aim of this work is to integrate readily available materials with the

implementation of the knowledge of software engineering and basic electrical and electronics to build an easy to use,

computerized navigation/tracking system capable of tracking the movements of a remote target.. Because of the tracking capabilities of the device it can easily be used to monitor the movements of a vehicle as well as for vehicle recovery [3].

With the development of GPS technologies and the improvement of 3G wireless communication network, the communication mode of GSM/GPRS-based positioning and monitoring system is constantly changing as well as its developing technology [5], aiming to build an efficient, reliable and wide range covered system by integrating the latest communications technology and the newest wireless network environment. The traditional

positioning and monitoring system consists of three parts: the GPS terminals, wireless communication network and control center as shown in Fig.1.



Fig 1: Positioning and monitoring system architecture

In today's world as the population increases day by day the numbers of vehicles also increases on the roads and highways. These results in more accidents that often lead to traffic jams and public gets help instantaneously. This module provides information about the accident to the hospital and police station. As a result sudden help public life may save and the traffic jams are reduced. To improve the level of supervision and management for cargo transport vehicles, especially trucks carrying coal it is important to develop transport vehicles remote monitoring module [1]. A server computer at the (remote) monitoring station that is continuously waiting for data from the system, should record the actions of the vehicle into a database. This contains the information regarding Vehicle velocity, position, identity and temperature in two fashions. The Information given to monitoring station is in continuous manner. The project requires a suitable microcontroller to co-ordinate all activities. This includes reading data sent by the GPS receiver module and communicating this data to the GSM modem. This ideal controller

should be able to handle these operations in terms of memory and processing speed [1].

## 2. Problem Definition

### Location Based Services

Location based services (LBS) define the broad spectrum of technologies which can calculate the position of a receiver. There are many types of LBS which function at varying degrees of accuracy and scope. The global positioning system (GPS) is an outdoor LBS which is capable of determining the location of a receiver within 15 to 100 meters of accuracy. GPS tracking and monitoring describes the use of GPS to determine the location of a receiver and consequently following its movements [6].

### Global Positioning System

The global positioning system (GPS) is a constellation of 24 satellites circling the earth on 6 different orbital paths. These satellites orbit the earth once every 12 hours and in doing so have the ability to calculate the position, time and velocity of any GPS receiver. It does this through precise timing calculations and a method called triangulation. Triangulation works on the premise that you can find any position if the distance from three other locations is also known. Initially conceived in the 1960's by the US Air Force it has cost \$14 billion (GPS World) and took 35 years to create. In 1974, other branches of the US Military joined the project and it was declared operational in 1995. Selective availability was initially imposed to limit signal accuracy for civilian usage but was revoked in 2000 [6].

The ability to track, trace and control anything by anyone from anywhere on the planet has been mankind's unfulfilled desire. The usefulness of GSM and GPS has made them popular in their own context; integrating these technologies can prove to be a flamboyant solution for many unsolved problems. To integrate these two technologies into one

system to provide an effective application for vehicle tracking as well as personal tracking. The system will provide solution for tracking and tracing of multiple movable objects at a same time. We can see the current location of the object and other add-on features, for vehicles there will be live tracing and tracking via GPS, controlling its subsystem parts via GSM network using SMS or GPRS.

### 2.1. Objective

In this urban life transportation is very common. A lot of mishappenings occur on the road every day. Various problems that we may face include, in critical condition, when vehicle meets with an accident or vehicle is stolen, one is confused what to do [2].

The motorcycle accident is a major public problem in many countries. Despite awareness campaign, this problem is still increasing due to rider's poor behaviors such as speed driving, drunk driving, riding with no helmet protection, riding without sufficient sleep, etc. The numbers of death and disability are very high because of late assistance to people who got the accident. These cause huge social and economic burdens to people involved. Therefore, several research group and major motorcycle manufacturers including Honda have developed safety devices to protect riders from accidental injuries. However, good safety device for motorcycle is difficult to implement and very expensive [4].

Therefore the need of tracking, security and monitoring is increased. The system is developed using GPS and GSM technologies and an application is introduced in my work which is for accidental monitoring. Global Positioning System (GPS) which will receive the coordinates from the satellites among other critical information.

Tracking system is very important in modern world. This can be useful in soldier monitoring, tracking of the theft vehicle and various other

applications. The system is microcontroller based that consists of a global positioning system (GPS) and global system for mobile communication (GSM). This project uses only one GPS device and a two way communication process is achieved using a GSM modem. GSM modem, provided with a SIM card uses the same communication process as we are using in regular phone [2].

## 3. Proposed System Architecture

### System Description

The system consists of cooperative components of an accelerometer, microcontroller unit (MCU), GPS device and GSM module for sending a short message. An accelerometer is applied for awareness and fall detection indicating an accident. The speed of motorcycle and threshold algorithm are used to decide a fall or accident in real-time. Mobile short message containing position from GPS (latitude, longitude) will be sent when motorcycle accident is detected. The robust package design is implemented so that it is safe from water's spray and dust in environment. The module is aimed to be installed under the motorcycle seat. A high performance 16 bits MCU is used to process and store real-time signal from the accelerometer. Thus, this device is analogous to a black box in airplane. The police and insurance examiner can obtain accident history to investigate accident situation from data-logger in this device. The device keeps data log of track and acceleration data for 1 minute before and after an accident. Moreover, this device can be used to track motorcycle after it was stolen in real-time by the use of Google Map in a terminal used in the remote control location [4].

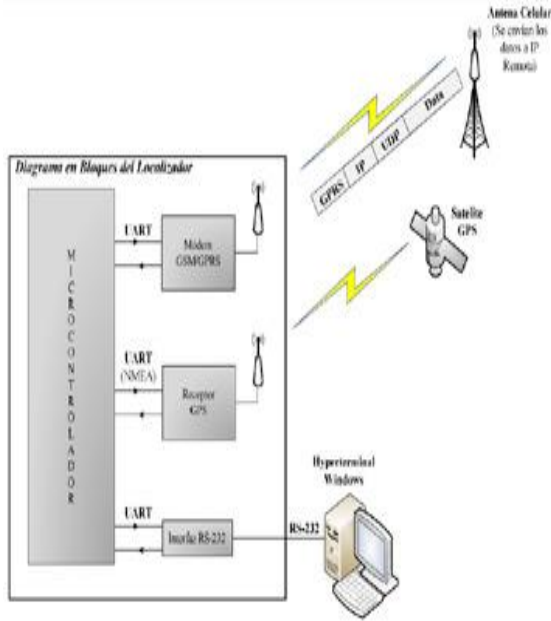


Fig 2: General system Design

### Methodology of Detection

The signal processing goal is to classify the original data into two classes, fall and not fall. In this system, the input data from 3 axis accelerometer was kept and processed in real-time with sampling rate of 60 Hz or higher. The signal from MEMs accelerometer was converted by 10 bits ADC into integer range between 0 and 1023. The sensor was embedded in a motorcycle seat to fix the accelerometers axis so that the response of acceleration data is well defined. The classification of the fall detection utilized the 3-axis acceleration signal from MEMs accelerometer and the ground speed from GPS module. In general, motorcycle fall can be classified as linear fall and non-linear fall. The linear fall is concerned about fall without external force, which is free falling condition that only z-axis acceleration changes. In this case, the non-linear fall data from accelerometer and the ground speed from GPS module is considered. To determine the accelerometer output, two frames of acceleration data, which include 3-axis acceleration at present time (t) and prior time

(t-1), are used for analysis. For a linear fall, the z-axis acceleration follows free falling condition which is given by,

$$|Az| \geq 9.7 \text{ m/s}^2 \quad (1)$$

where the Az is the z-axis acceleration [4].

In a non-linear fall, two frames of acceleration data are used. From non-linear fall experiments under most likely situations, the change of acceleration between two consecutive frames should be more than 15.5 m/s<sup>2</sup>. Thus, the non-linear fall condition is given by,

$$|A_n, t - A_n, t-1| \geq 15.5 \text{ m/s}^2 \quad (2)$$

Where the A<sub>n, t</sub> is acceleration from x, y or z coordinate at the present time frame and A<sub>n, t-1</sub> is acceleration parameter from x, y or z coordinate in the previous time frame. From equation, if the difference of acceleration in two time frames is more than 15.5 m/s<sup>2</sup>, the first condition of non-linear fall accident of motorcycle is met. The ground speed from GPS module then used to decide whether actual non-linear fall accident occurs. If ground speed becomes zero after detection of large acceleration change as indicated in equation (2), non-linear fall detection in motorcycle is detected and fall alert message will be sent. However, false detection may occur in case of a severe brake because data are not kept and processed over a long time frame [4].

### Accident Detection Flowchart

The following flowchart describes how the system detects type of fall and detecting accident by sending alarm.

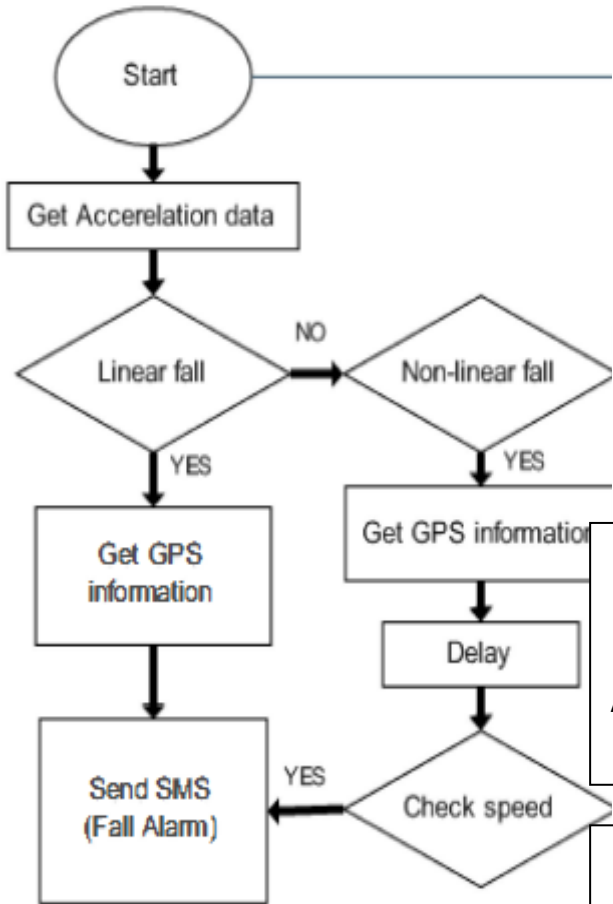


Fig 3: Accident Detection Flowchart

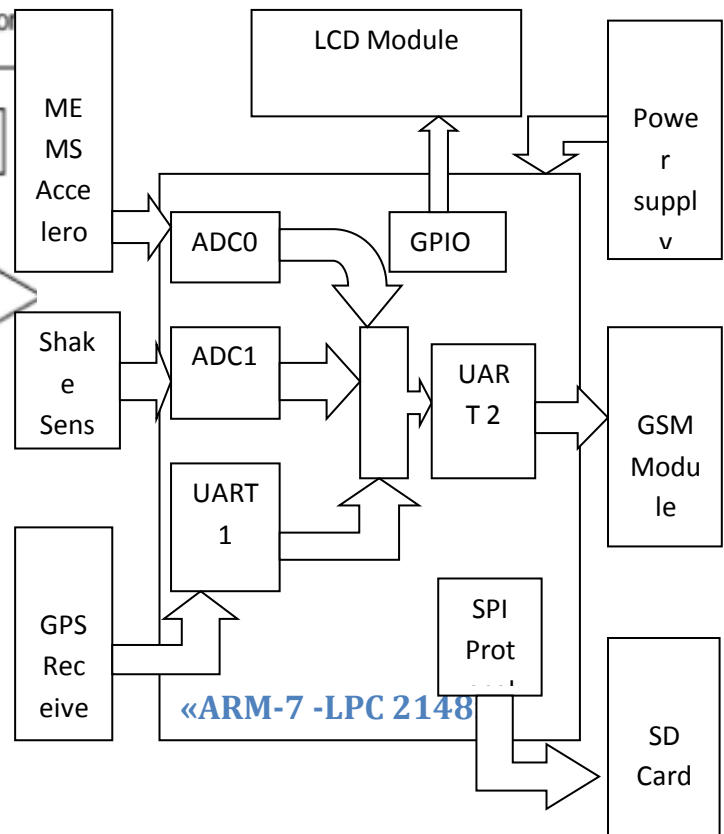
#### 4. System Block Diagrams

##### Vehicular Unit

The complete block diagram of vehicle unit is as shows in figure 4. The vehicular system [VS] includes hardware that consists of an ARM 7 TDMI core processor, Accelerometer, GPS module, GSM module, SD memory card, 16x2 LCD, and temperature sensor. The whole VS works on a 5V or 9V dc regulated power supply. The GPS receiver module interfaced with UART1 of ARM processor provides speed and location information. The identity of a vehicle is fixed that is saved in a flash memory of a processor. The temperature sensor provides temperature

per degree Celsius to an ARM processor. The temperature sensor is interfaced to an ADC1 of ARM processor. Vehicular speed, position and temperature are stored in a SD card. The SD card is interfaced to an ARM processor using SPI (Serial Peripheral Interface). All this information are shown on LCD that is interfaced with a GPIO 0 and send it to a monitoring station (receiver side) by GSM module wirelessly that is interfaced with UART0 of ARM processor [1].

Fig 4: System Block Diagram – The Vehicular Unit



Also the same information is given to a concern person to get that information anywhere anytime. The module requires GSM SIM (Subscriber Identity Module). As per the definite event stored in a program and when collision/accident occurs that is sense by an Accelerometer which is interfaced to ADC0 of ARM processor [1].

## DESCRIPTION OF INDIVIDUAL UNITS

### GSM MODULE:

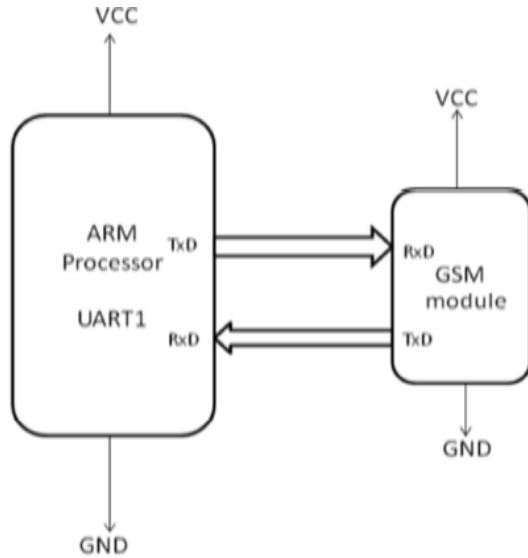


Fig 5: Interfacing of GSM module on UART1

Global System for Mobile communications (GSM) is the almost popular wireless standard for mobile phones in the world. GSM module allows transmission of Short message service (SMS) in TEXT mode and PDU mode. The proposed design uses SIM 300 GSM module in text mode.

This design uses SIM300 GSM module that provide 900/1800/1900MHz Tri-band for VOICE, SMS, DATA, and FAX. This module operates on AT command over TTL interface. AT command is an abbreviation for Attention command that is recognized by GSM Module. This abbreviation is always used to start a command line to be send from TE (Terminal Equipment) to TA (Terminal Adaptor).The information contains information speed, position (longitude, latitude), identity and temperature of a vehicle that is transmitted to the monitoring station by the SMS through the GSM network.. SIM 300 Module works on 12V, 2A power supply. The module is configured at 9600 baud rate. Figure 2 shows interfacing of GSM module with ARM Processor on UART1 where TxD pin of ARM processor is connected to RxD pin of GSM module and vice versa. The transmitted data

from ARM processor using UART1 module contains information about Vehicle Identity that may be checked and displayed.

### GPS MODULE:

Global Position System (GPS) is a space-based satellite navigation that provides location and time information in all weather conditions, anywhere on or near the Earth. GPS Receiver MT3318 Module is used. The GPS receiver tracks 51 satellites simultaneously. The module is mounted on the PCB along with the 3.3V low drop voltage regulator, transmit, receive and power indication LEDs, Schmitt trigger based buffer for 5V to 3.3V logic level conversion. This GPS receiver gives data output in standard National marine electronics association (NMEA) format. The GPS receiver gives -157dBm tracking sensitivity. The module is configured at 9600 baud rate. Module requires a 5V supply and can be interfaced with the 5V TTL / CMOS logic.

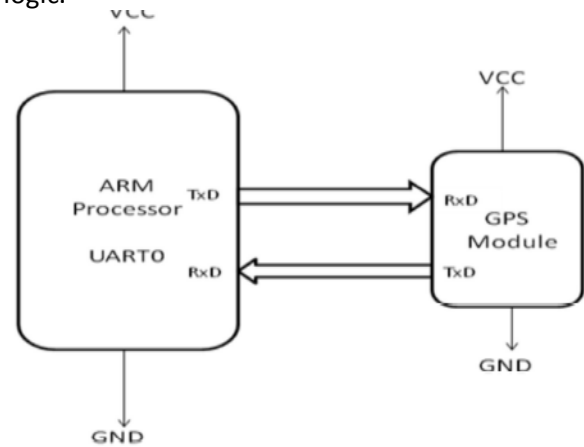


Fig 6: Interfacing of GPS Module

### ACCELEROMETER:

An accelerometer measures acceleration. Acceleration is a measure of how quickly speed changes. Accelerometer sensor is used to measure static (earth Gravity) or dynamic acceleration in all three axes, forward/backward, left/right and up/down. The output of accelerometer provides 1.65V to 3.3V

in positive direction and in negative direction the voltage drop from 1.65V to 0V. The output of accelerometer is in analogue form with three different output voltages each representing X, Y and Z direction of motion. These three voltage signal are processed through ADC0 on three different Channels available on ARM. The 8 bit digital output from ADC0 is fed to UART1 of ARM. Accelerometer is used in this design for the collision detection. The maximum output voltage of accelerator module is 3.3V that is a CMOS voltage of the processor.

#### ARM7 PROCESSOR:

The conventional 8 and 16bit Microcontrollers has its deficiencies when compared with 32bit microcontroller. This proposed system design uses the ARM processor. ARM architecture is based on Reduced Instruction Set Computer (RISC) principles, and the instruction set and related decode mechanism are much simpler than those of micro programmed Complex Instruction Set Computers. This simplicity results in a high instruction throughput and impressive real-time interrupt response from a small and cost-effective processor core. The Philips LPC2148 which is based on 32 bit ARM7 TDMI core supporting real time simulation. When ARM processor combined with RTOS with timing constraint can be realized for the data acquisition and transmission of data with high precision [1].

#### DATA STORAGE:

The system includes memory card which is used to store data. The data contains vehicle 'ID', 'Position' (Longitude', 'Latitude)', date, time and velocity of a vehicle. The memory card can be expanded depending upon the purpose. The data storage provision is implemented using Serial Peripheral Interface (SPI) protocol supported by the LPC2148 ARM7 processor. This stored data can be access any time for monitoring (speed of a vehicle, correct path, collision etc.), comparison, and traffic analysis purpose etc.

#### 4.4.2. RECEIVER / MONITORING SECTION

GSM module provides information in text mode. The information is given to a computer by interfacing of GSM module to computer by use of USB to SERIAL convertor. Most of the laptops are not having serial port and also in certain PC. As the size of the laptop are shrinking so the serial port are removed. The Location, Velocity and Identity of a vehicle can be display to the GUI and stored in a database. Figure 6 shows interfacing of GSM module with the PC using USB to serial convertor. The data received from GSM module is stored in data base and also it can be show on GUI. In case of accident occur the position of vehicle can be easily track by the use of use of Google map software. The monitoring station uses a single GSM module which can communicate with number of modules at run time which is a high real time need. This information can also be sending to the nearest hospital/police station to get help easily .This will certainly save the lives.

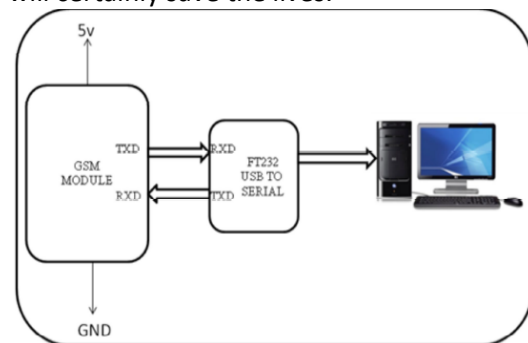


Fig 7: Interfacing of GSM module with PC

#### 5. Software Used

##### Kiel $\mu$ vision IDE:

Keil $\mu$ Vision IDE (Integrated Development Environment) is a Windows based front end for the C Compiler and assembler. Keil $\mu$ Vision4 is used for writing embedded C programs. Embedded C is a high level language, which includes many aspects of the ANSI (American National Standard Institute) C programming language. Standard libraries are altered or

enhanced to address the peculiarities of an embedded target processor [7]. The signal from accelerometer module is processed by the processor. The analog signal from this module is applied to the on-chip peripheral ADC0. This ADC0 is configured as a 10-bit output data which gives high precision compared to the 8-bit microprocessors. This digital data is transmitted through UART1. UART1 transmits the data 8-bit at a time. These digital values are transmitted to GSM module through UART1.

### Graphical User Interface

The GUI for the proposed system is designed on Visual Studio 2010. C # is a simple, modern, object-oriented, and type-safe programming language. Microsoft's C# compiler for the .NET Framework is a conforming implementation of both of these standards. Exception handling provides a structured and extensible approach to error detection and recovery. Also this language is compatible with all Microsoft applications [1].

### 6. Features of the System

Key feature of this design include

- a. Vehicle real-time monitoring by sending "its" information regarding velocity, Position (longitude, latitude) to the monitoring station and to the user/owners mobile that should help them to get medical help if accident or the theft.
- b. Display that information on GUI and also at the same time these information are stored in the database.
- c. User/owner has an access to get real-time position of a vehicle in real time.
- d. Also in case of theft, vehicle should be stop at the same time where this system is ported on the mobile vehicle.
- e. It includes a temperature sensor that gives temperature in degree Celsius for monitoring the environmental conditions around the goods or other stuff in the transport vehicle [1].

### 6. CONCLUSION

The Vehicular System provides information of a vehicle like velocity, position, through a GPS module and identity of a vehicle to a monitoring station and to a mobile phone according to a definite event stored in a program or a query from a monitoring station. Accelerometer senses the collision of the vehicle and sends this information in real time to a hospital/police station. The monitoring station display these information on GUI also stored these information in database for further process according to a program. The system is useful in much application such as surveillance, security, tracking, which may be installed in cargo trucks, cars, motorcycle, and boat. The system can be used in many applications.

### REFERENCES

- [1] Saurabh S. Chakole, Asstt. Prof. Vivek R. Kapur, Asst. Prof. Y. A. Suryawanshi " ARM Hardware Platform for Vehicular Monitoring and Tracking", 2013 International Conference on Communication Systems and Network Technologies.
- [2] Pankaj Verma, J.S Bhatia," Design And Development Of Gps-Gsm based Tracking System With Googlemap Based monitoring", International Journal of Computer Science, Engineering and Applications (IJCSSEA) Vol.3, No.3, June 2013 .
- [3] Mbaocha C. Christian, " Vehicle Tracking/Feedback System Using GPS Technology", IOSR Journal of Electrical and Electronics Engineering (IOSRJEET) ISSN: 2278-1676 Volume 1, Issue 3 (July-Aug. 2012), PP 26-30 .
- [4] N. Watthanawisuth, T. Lomas and A.Tuantranont," Wireless Black Box Using MEMS Accelerometer and GPS Tracking for Accidental Monitoring of Vehicles", Proceedings of the IEEE-EMBS International Conference on Biomedical and Health Informatics (BHI 2012), Hong Kong and Shenzhen, China, 2-7 Jan 2012



- [5] Yanlan Yang, Hua Ye, Shumin Fei, "Design of Communication Interface for M2M-based Positioning and Monitoring System", BHI,2011,IEEE .
- [6] A. Mcnamee, University of Wollongong " Ethical Issues arising from the Real Time Tracking and Monitoring of People Using GPS-based Location Services", University of Wollongong Thesis Collections
- [7] El-Medany,W.;Al-Omary,A.;Al-Hakim,R.;Al-Irhayim,S.;Nusaif,M., "A Cost Effective Real-Time Tracking System Prototype Using Integrated GPS/GPRS Module," Wireless and Mobile Communications (ICWMC), 2010 6th International Conference on, vol., no., pp.521,525,20-25 Sept.2010
- [8] Hu Jian-ming; Li Jie; Li Guang-Hui, "Automobile Anti-theft System Based on GSM and GPS Module," Intelligent Networks and Intelligent Systems (ICINIS), 2012 Fifth International Conference on , vol., no., pp.199,201, 1-3 Nov. 2012.
- [9] Fleischer, P.B.; Nelson, A.Y.; Sowah, R.A.; Bremang, A., "Design and development of GPS/GSM based vehicle tracking and alert system for commercial inter-city buses," Adaptive Science & Technology (ICAST), 2012 IEEE 4th International Conference on , vol., no., pp.1,6, 25-27 Oct. 2012.
- [10]Le-Tien, T.; Vu Phung-The, "Routing and Tracking System for Mobile Vehicles in Large Area," Electronic Design, Test and Application, 2010. DELTA '10. Fifth IEEE International Symposium on , vol., no., pp.297,300, 13-15 Jan. 2010.